

<GENERAL PARTICULAR>

MV NEW DRAGON

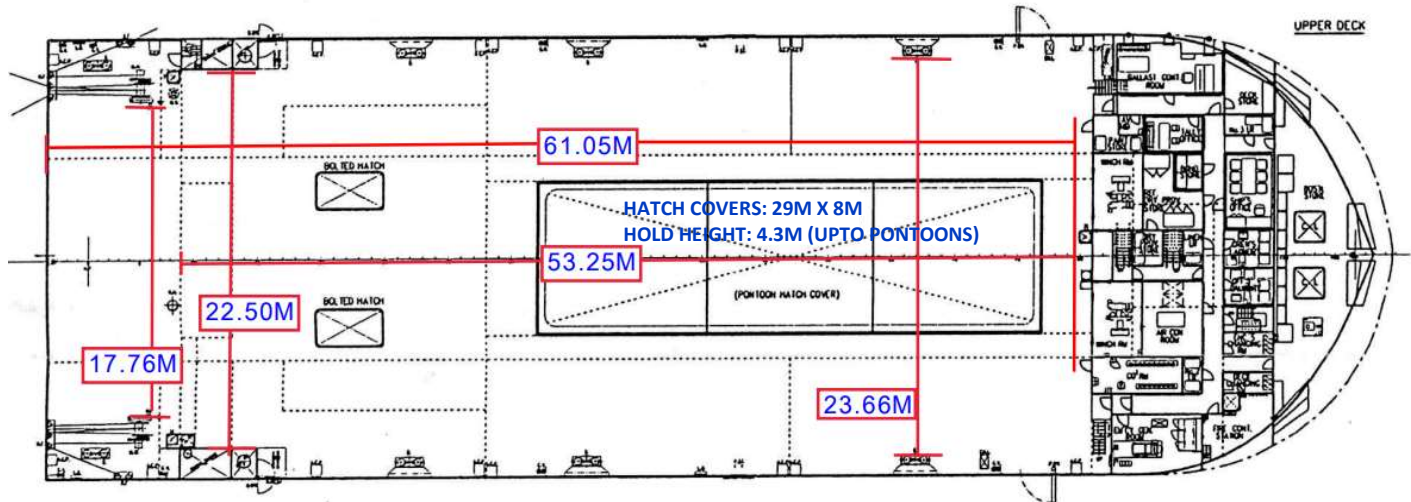


Multipurpose Self Propeller Deck Ship (多目的自航台船)



NATIONALITY	LIBERIA	DEPTH	6.30M
PORT OF REGISTRY	MONROVIA	HEIGHT	27.00M
OFFICIAL NUMBER	22813	DATE OF BUILT	SEP.2007/TSUJI HEAVY INDUSTRIES(JIANGSU) CO., LTD
IMO NUMBER	9443217	CLASSIFICATION	NK
CALL SIGN	5LK08	MAIN ENGINE	NIIGATA 6M28BGT TYPE DIESEL X 2SET
NAME OF OWNER	C.I.MARINE SHIPPING INC	M/E OUT PUT	MCO1,400PS X 390RPM / CSO1,190PS X 369RPM
NAME OF OPERATOR	C.I.MARINE SHIPPING INC	BOW THRUSTER	320HP
GROSS TONNAGE	3,675	CREW	13P
NET TONNAGE	1,103	CARGO HOLD	ABOUT 1,003M3(GRAIN CAPACITY)
D/W TONNAGE	3,712.53 TONS	CARGO DECK AREA	ABOUT 1,402M2
DISPLACEMENT	5,826.99 TONS (3.514M)	MMSI NUMBER	357693000
LIGHT CONDITION	2,114.46 TONS (1.430M)	INMARSAT-C	463739129
L.O.A	80.00M	INMARSAT-F, TEL	827088925743(BRIDGE)/827088925744(CAPT)
L.P.P	75.00M	E-MAIL ADDRESS	NEWDRAGON@SEA-ONE.COM
BREADTH	26.00M	JAPAN MOBILE PHONE	080-1525-1746

Effective space of main deck



<Carrying LNG Tank (340MT) for bulk carrier's fuel tank >



<Cargo Hold>



<特徴> *Characteristic*

* 近海航路での重量物輸送に対応する自航台船である。

This is a self-propelled carrier that supports the transportation of heavy cargo on near sea area.

* 全長80M, DWT3,712T, 満載喫水3.6M と、あらゆる港湾施設への係船が可能である。

With a total length of 80M, DWT3,712T, and a full draft of 3.6M, it is possible to enter to all port facilities.

* バラスト機能は1,400T/H の能力を有するため、RORO作業への対応も可能である。

Since the ballast function has a capacity of 1,400 T/H, it is also possible to support RORO operation.

* 自航（曳航ではない）であるため、曳航検査不要、荒天時の航行にも有利である。

Since it is self-propelled (not towing), it does not require towing inspection and is advantageous for

MV NEW DRAGON